

# 1-day pass (purchase at partner counter) how to use

## 1. Purchase a card key at a partner counter

- ① Fill out the application form and purchase a card key at the partner counter



**Items necessary**

- Smartphone or mobile phone

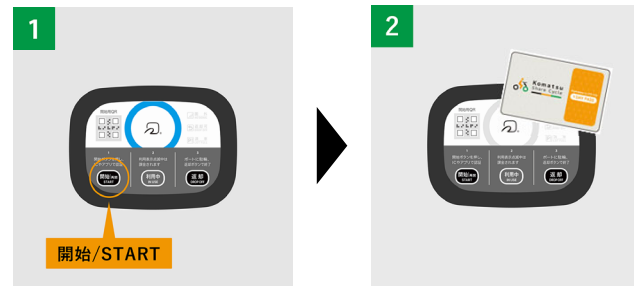
**Payment**

- Cash, etc.

\*Depends on the payment methods offered at the partner counter

## 2. Unlock using the purchased card key

- ① Press the **[START]** button on the bicycle
- ② Hold the card key over the top of the device
- ③ The bicycle lock will **disengage**
- ④ **Begin use**



## 3. Returning the bicycle

**Please be sure to return the bicycle to the nearest cycle port**

- ① Push the bicycle into the rack and **engage the lock**
- ② Press the **[DROP OFF]** button on the bicycle
- ③ When the blue ring on the device lights up, **return is complete**

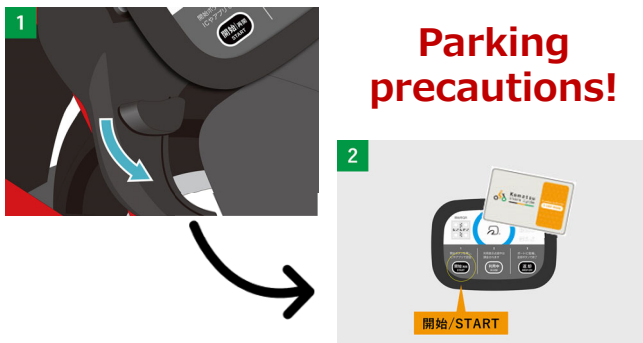


## Parking the bicycle temporarily (not at a cycle port)

- ① **Simply engage the lock** on the bicycle

### <Resuming use>

- ① Press the **[START]** button on the bicycle
- ② Hold the card key over the top of the device



## 1-day pass usage precautions

- ① During holidays such as Golden Week and Silver Week when usage is high, there may be a shortage of bicycles at the ports. It may not be possible to use a bicycle.
- ② **Before riding a bicycle, be sure to check the remaining battery level.**  
If the battery runs out while in use, we cannot replace it. In such a case, the user is required to return the bicycle to a port and switch bicycles.
- ③ **For 1-day Pass users, we do not recommend temporarily parking your bicycle at a port.**  
Temporarily parked bicycles can be returned by pressing the drop off button at a port (the link with the user who temporarily parked the bicycle will be canceled), and any registered user can begin using them. For example, there have been cases where a member of the public touches the panel out of curiosity and accidentally presses the return button, or where a bicycle temporarily parked near a port is used by another customer who presses the drop off button.  
Please avoid temporarily parking your bicycle at a port, and instead **park your bicycle in facilities' bicycle parking lots.**
- ④ The 1-day Pass can be used until **23:59 on the same day. Please be sure to return the bicycle to a port in the city when you have finished.** If the bicycle is stolen or damaged due to being left in a location other than a port, the user will be responsible for the cost of the bicycle.